

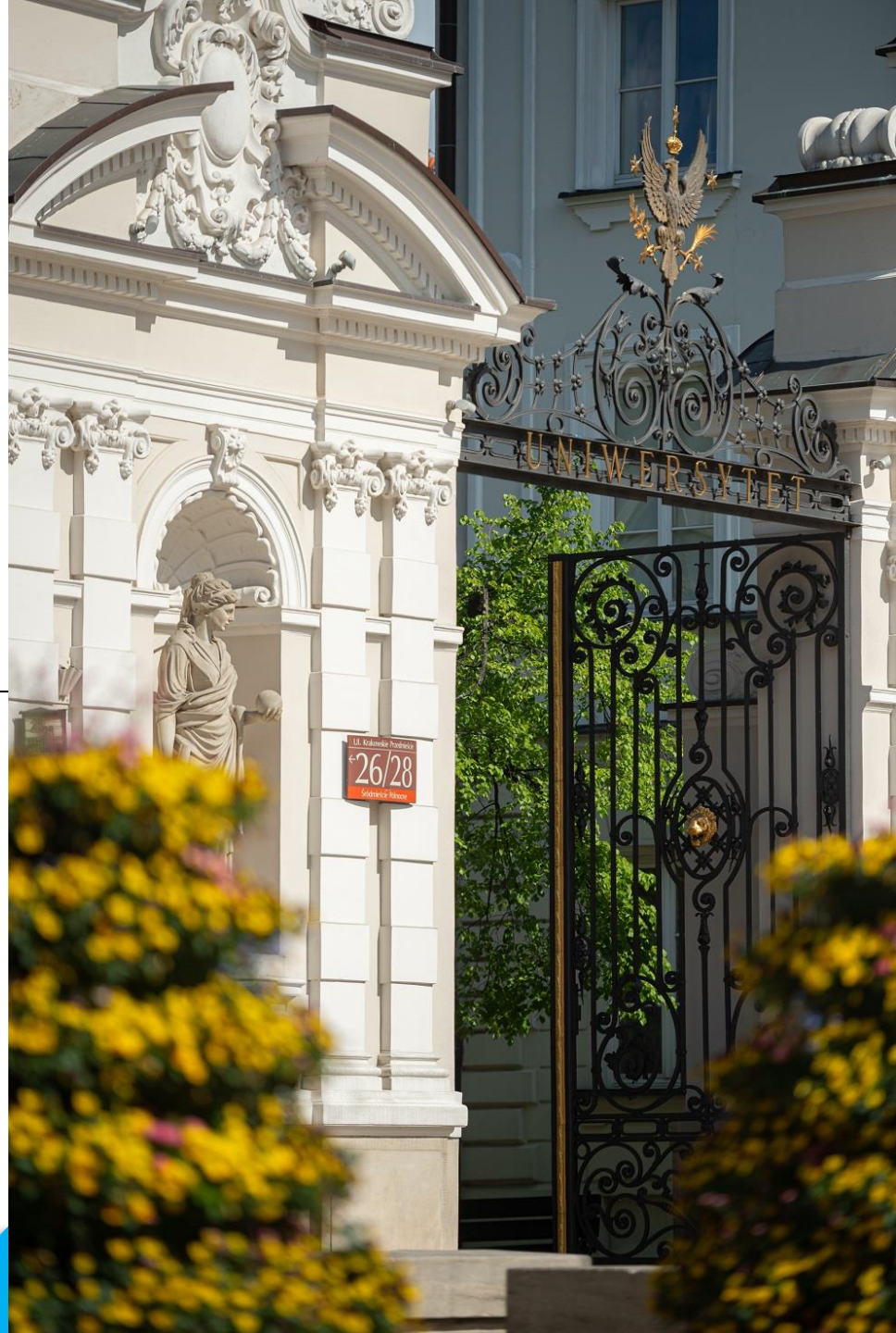


UNIVERSITY
OF WARSAW

<http://en.uw.edu.pl>

Faculty of Modern Languages

ul. Dobra 55, 00-312 Warszawa
tel. (22) 55-20-912, (22) 55-20-950
fax. (22) 55-21-557



Poland is the 7th largest country in Europe (population of 38 million people). It is a member of the European Union and the Schengen Area. Whoever enters Poland may freely travel around all member states.



WARSAW – AN ACADEMIC CITY



- Capital city of Poland: 1.7 million inhabitants, 8.3 million tourists per year, 150 cinemas, theatres, music venues and museums, 80 parks, 450 kilometres of bike trails
- 15 public Higher Education Institutions (HEIs)
- 240 000 students per year (more than in Berlin or Prague)
- According to Nature: Warsaw is the country's main research hub and is becoming a hub of globally competitive science. (“Poland: Into the light”, 2017)
- According to QS Best Student Cities 2019 Warsaw took 51st place in the world. It receives a very high score in the affordability category thanks to its combination of low living costs and reasonable tuition fees.



The University of Warsaw was founded in 1816. It is the largest university in Poland and the best research centre in the country.

27 ENGLISH-LANGUAGE PROGRAMS

- American Studies (1st, 2nd cycle)
- Archaeology (1st, 2nd cycle)
- Chemistry (2nd cycle)
- Cognitive Science (2nd cycle)
- Data Science and Business Analytics (2nd cycle)
- English Studies (1st, 2nd cycle)
- Environmental Management (2nd cycle)
- European Politics and Economics (1st cycle)
- Finance, International Investment and Accounting (1st cycle)
- Humanitarian Action (2nd cycle)
- International Business Program (2nd cycle)
- International Economics (2nd cycle)
- International Relations (1st, 2nd cycle)
- International Studies in Philosophy (1st cycle)
- Master in Food Systems (2nd cycle)
- Oriental Studies – Inner Asia: Mongolian and Tibetan Studies (2nd cycle)
- Physics (2nd cycle)
- Political Science (1st, 2nd cycle)
- Psychology (uniform Master's cycle)
- Sustainable Development (2nd cycle)
- Quantitative Finance (2nd cycle)
- Teaching English to Young Learners (2nd cycle)

The University of Warsaw provides education which is a definite asset in the labour market. According to the monitoring of UW graduate careers, 94% of former students find employment within a year of graduation.



The University of Warsaw life is concentrated on three campuses:

- Main Campus – historic seat of the University, located in the heart of Warsaw
- Ochota Campus – home to science and natural science
- Służewiec Campus – home to the Faculty of Management and a part of the Faculty of Applied Linguistics buildings, student dormitories



Faculty of Modern Languages



ul. Dobra 55, 00-312 Warszawa
tel. (22) 55-20-912, (22) 55-20-950
fax. (22) 55-21-557

Erasmus+ @Faculty of Modern Languages

- Choose the MSF program (2 languages + culture and literature classes from 2 Institutes)
- Choose BA and MA classes from any of the 5 Institutes and create your own program
 - BA classes normally require B2 language level
 - MA classes normally require C1 language level
 - You can also attend classes in the Institute of Russian Studies, Faculty of Applied Linguistics
 - When in doubt, check with mobility coordinators
- Participate in language courses (*lektorat*), available to all students of the University of Warsaw
- Sign up for an *OGUN*: a variety of elective courses in different languages and disciplines, available to all students of the University of Warsaw

Faculty of Modern Languages =

INSTITUTE OF ENGLISH STUDIES	INSTITUTE OF FRENCH STUDIES	INSTITUTE OF GERMAN STUDIES	INSTITUTE OF IBERIAN AND IBERO-AMERICAN STUDIES	DEPARTMENT OF ITALIAN STUDIES
	 <p>INSTYTUT ROMANISTYKI</p>	 <p>UNIWERSYTET WARSZAWSKI Wydział Neofilologii Instytut Germanistyki</p>	 <p>IBER</p> <p>Instytut Studiów Iberyjskich i Iberoamerykańskich Uniwersytetu Warszawskiego</p>	

msf Międzykulturowe
Studia Filologiczne

Click on an Institute/Program logo to get more information.

Faculty of Modern Languages: degree programs

- Each of the 5 Institutes offers individual BA and MA degrees.
- The Faculty also offers a multilingual, four-year BA program, created as a result of the cooperation of the 5 Institutes: Intercultural Language Studies (or MSF: Międzykulturowe studia filologiczne).



Find degree programs and classes

DOCUMENTS

- main page
- help and contact

REGISTRATION CALENDAR

CONTACT



European Union

last data migration: ~6 hours ago

last modification of this document: 86 days ago

Welcome to the USOSweb system

The Central Server is administered by the Department for Computer Applications (DAK)

NOTICE!!! (22.10.2021 y.) Upgrade USOS 6.7.1. - rescheduling of date

We kindly inform that USOS, USOSweb, USOSadm Java, APD, SRS services may be unavailable from 2 pm to 10 pm on the 3rd November 2021 due to update to 6.7.1.

We apologize for inconvenience. (DAK)

@ USOSweb

or

@ <http://informatorects.uw.edu.pl/en/courses/>

USOSweb: Central Server and System for *Everything*

USOSweb

NEWS **DIRECTORY** MY USOSWEB STUDENT'S SECTION STAFF SECTION COMMON SECTION GRADUATES SECTION

INDEX
STUDENTS AND STAFF
FACULTIES
COURSES
STUDIES
DORMITORIES
HELP

Students, Staff
Find students and staff members
i (n Polish) **SEARCH**

Faculties
Faculties/Departments hierarchy
 SEARCH

Courses
Browse courses offered
 SEARCH

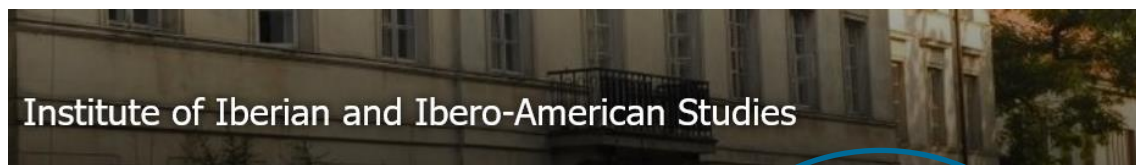
Studies
Specialities and study programs
 SEARCH

Dormitories
Information on dormitories

Help
How to use directory and search engines

USOSweb

- Program information
- Detailed course descriptions and requirements
- Course registration
- Staff information
- Maps
- Grades



ERARCHY

- 📖 Map of faculty buildings
- 👤 List of dydactic staff members
- 🏛️ Study programmes offered
- 📖 Courses conducted

DEGREE PROGRAMS @USOSweb



Intercultural Language Studies

Full time, first cycle studies (BA)

Each student chooses 2 areas of study, or 2 „philological minima” (=two languages and corresponding Culture and Literature classes).

Detailed Program Description

Courses marked blue and red are taught in Polish
Courses marked black are offered by one of the Institutes
Elective Courses* are chosen from the offer of each Institute

*Elective courses are subject to change every year

DEGREE PROGRAMS @USOSweb



INSTITUTE OF ENGLISH STUDIES

Study Programs

Full-time undergraduate English Studies

Compulsory courses

Elective courses*

Formal Linguistics
Applied Linguistics
American Culture
British Culture
American Literature
British Literature

*Elective courses are subject to change every year

DEGREE PROGRAMS @USOSweb



INSTITUTE OF FRENCH STUDIES

BA French Studies

Optional Study Paths: French for beginners /
Advanced French

Elective courses*

- „przedmioty obieralne”
„przedmioty do wyboru”:
- History and culture
 - Linguistics
 - Literature

*Elective courses are subject to change every year

DEGREE PROGRAMS @USOSweb

INSTITUTE OF GERMAN STUDIES

[Courses offered by the Institute](#)

[Detailed Program Information in Polish](#)



UNIwersytet
Warszawski

Wydział Neofilologii
Instytut Germanistyki

DEGREE PROGRAMS @USOSweb



INSTITUTE OF IBERIAN AND IBERO-AMERICAN STUDIES

Study programs offered

Applied Hispanic Studies (evening)
Hispanic Studies
Portuguese Studies

Elective courses*

Hispanic Studies
Portuguese and Brazilian Studies

*Elective courses are subject to change every year

DEGREE PROGRAMS @USOSweb



INSTITUTE OF ITALIAN STUDIES

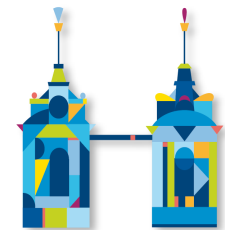
Study programs offered

BA in Italian Studies



WHAT TO DO:

- Get nominated by your university
- Visit our **International Relations Office** website and learn how to apply: <http://en.bwz.uw.edu.pl/incoming>
- Choose your courses @USOSweb
- Make sure you check what language they are taught in
- Give the list of your preferred courses to the MSF mobility coordinator
- Wait for approval
- Register for classes
- In case of program doubts, consult mobility coordinators for incoming students at each Institute
- **For general questions about Erasmus @UW, contact your mobility officer ([Incoming student mobility](#)).**



MSF, Intercultural Language Studies

mobility coordinator:

Zofia Grzesiak, PhD
zofia.grzesiak@uw.edu.pl

msf Międzykulturowe
Studia Filologiczne

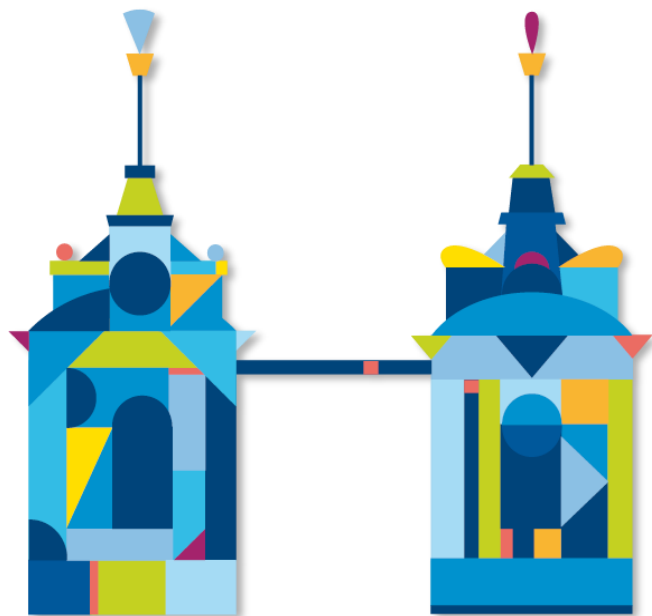
More about Erasmus @ the University of Warsaw

- [UW welcome point](#)
- [Erasmus @UW](#)
- [International Relations Office](#)
- [Maps, guidebooks, presentations](#)

WELCOME
POINT

Erasmus+





UNIVERSITY OF WARSAW

Krakowskie Przedmieście 26/28
Warsaw, Poland

<https://en.uw.edu.pl>